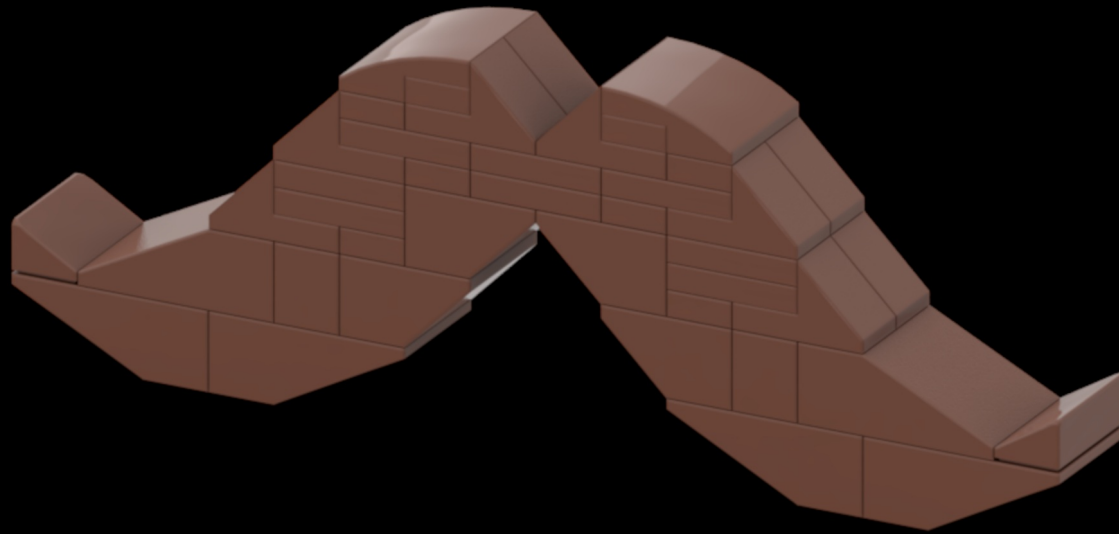


Mustache Brown



*Instructions by Bird Brick Builds
Author: Eduardo Sousa
44 Parts*



*Original Author: Bolbuyk
Original Model: <https://rebrickable.com/mocs/MOC-1688/Bolbuyk/moustache/#details>*

November

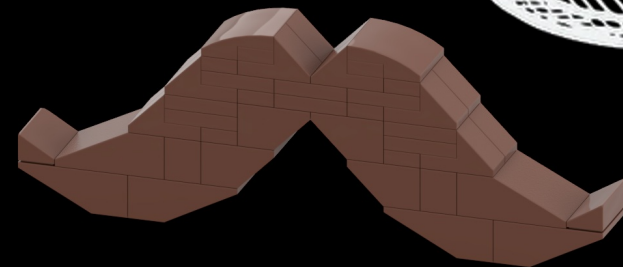
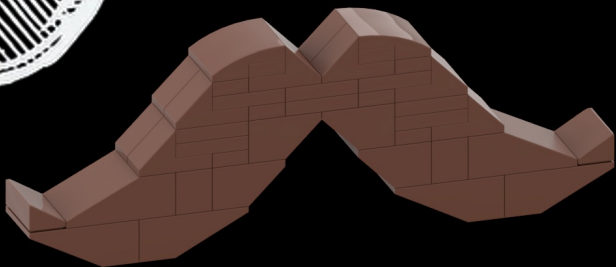
This LEGO mustache model is more than just a playful build it's a heartfelt tribute to the Movember movement and a salute to all the men who have faced the toughest battles against cancer or mental health challenges and found the strength to rise again.

The Movember movement began as a simple idea: grow a mustache to spark conversations about men's health, and in doing so, break the silence around topics often left in the shadows, like prostate cancer, testicular cancer, and mental illness. Every year, millions of men grow out their 'staches as a symbol of solidarity and awareness, encouraging others to seek help, take care of their health, and check in on one another.

This LEGO mustache model is a homage to that spirit of resilience. Each piece that comes together in this build represents the small steps, the moments of courage, and the collective strength it takes to overcome life's toughest challenges. It's a reminder that even when things fall apart, we have the power to rebuild, brick by brick, step by step.

For those who have fought, are fighting, or supporting someone on this journey, this build is for you. Let this mustache stand as a symbol of hope, strength, and the importance of never giving up. Whether it brings a smile to your face or serves as a conversation starter, may it remind us all to keep looking out for each other.

Grow it, build it, and let's continue to spread awareness together. Because no man should ever have to face these battles alone.





Attribution-NonCommercial-ShareAlike 4.0 International (CC BY-NC-SA 4.0)

This is a human-readable summary of (and not a substitute for) the [license](#). [Disclaimer](#).

You are free to:

Share — copy and redistribute the material in any medium or format

Adapt — remix, transform, and build upon the material

The licensor cannot revoke these freedoms as long as you follow the license terms.

Under the following terms:



Attribution — You must give [appropriate credit](#), provide a link to the license, and [indicate if changes were made](#). You may do so in any reasonable manner, but not in any way that suggests the licensor endorses you or your use.



NonCommercial — You may not use the material for [commercial purposes](#).



ShareAlike — If you remix, transform, or build upon the material, you must distribute your contributions under the [same license](#) as the original.

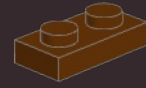
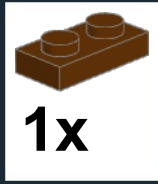
No additional restrictions — You may not apply legal terms or [technological measures](#) that legally restrict others from doing anything the license permits.

Notices:

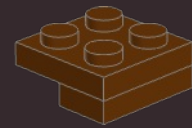
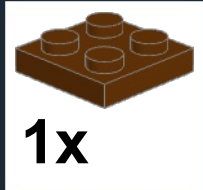
You do not have to comply with the license for elements of the material in the public domain or where your use is permitted by an applicable [exception or limitation](#).

No warranties are given. The license may not give you all of the permissions necessary for your intended use. For example, other rights such as [publicity, privacy, or moral rights](#) may limit how you use the material.

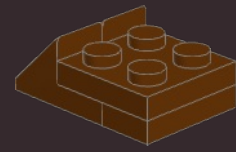
1



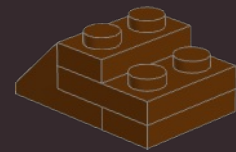
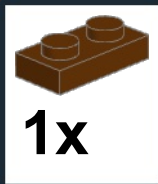
2



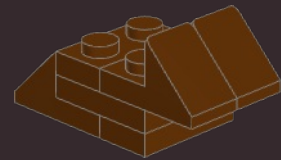
3



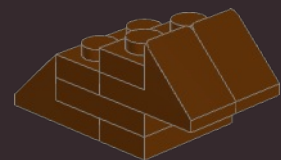
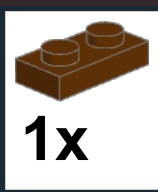
4



5



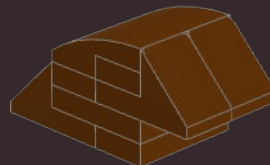
6



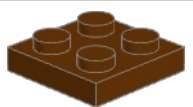
7



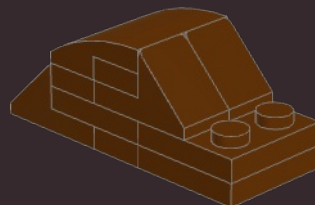
1x



8



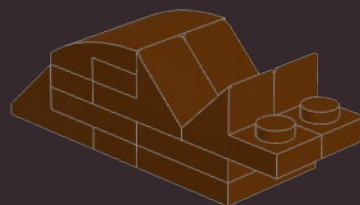
2x



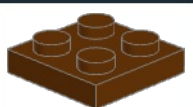
9



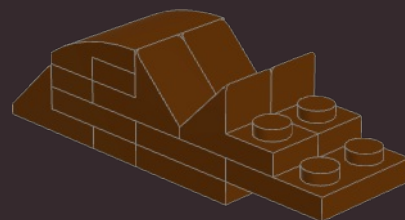
2x



10



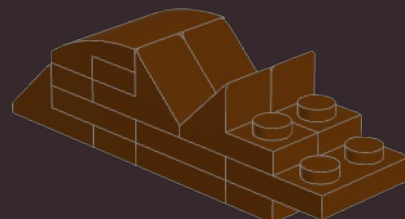
1x



11



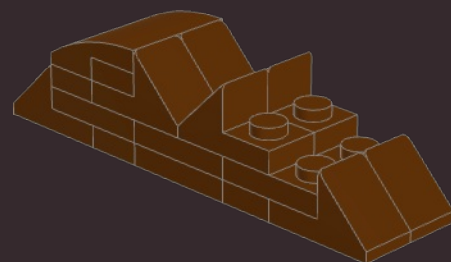
1x



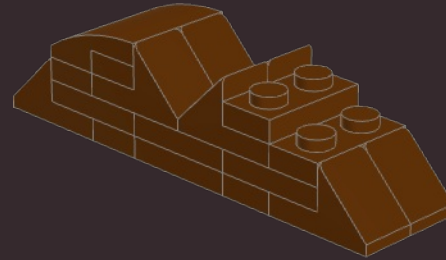
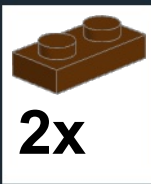
12



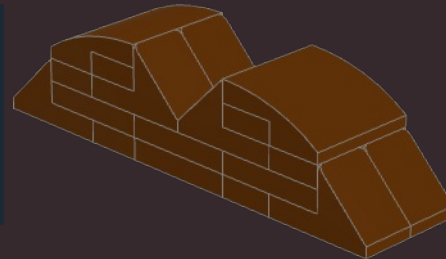
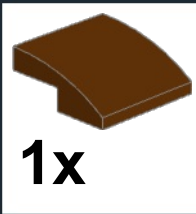
2x



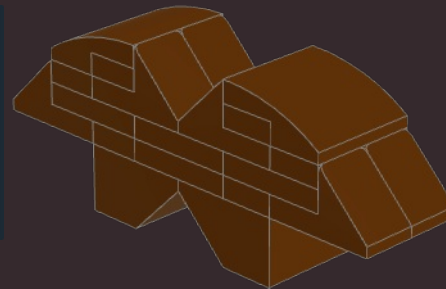
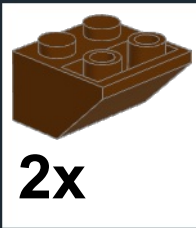
13



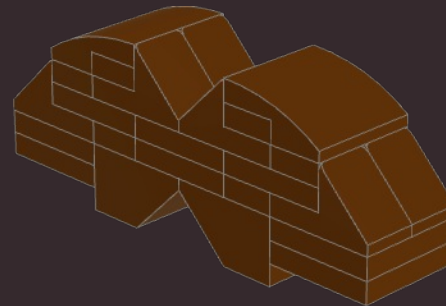
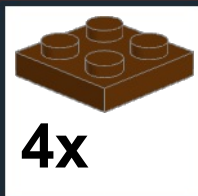
14



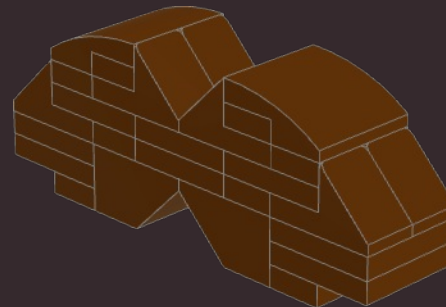
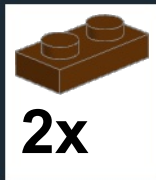
15



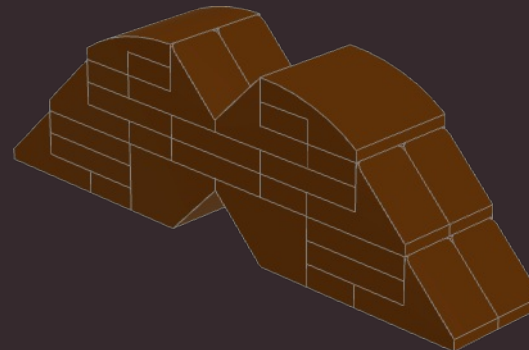
16



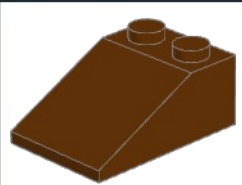
17



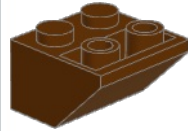
18



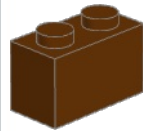
19



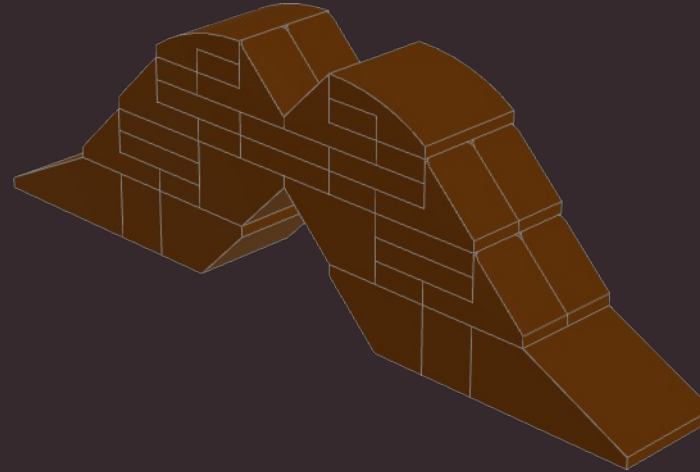
2x



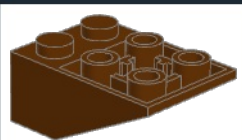
2x



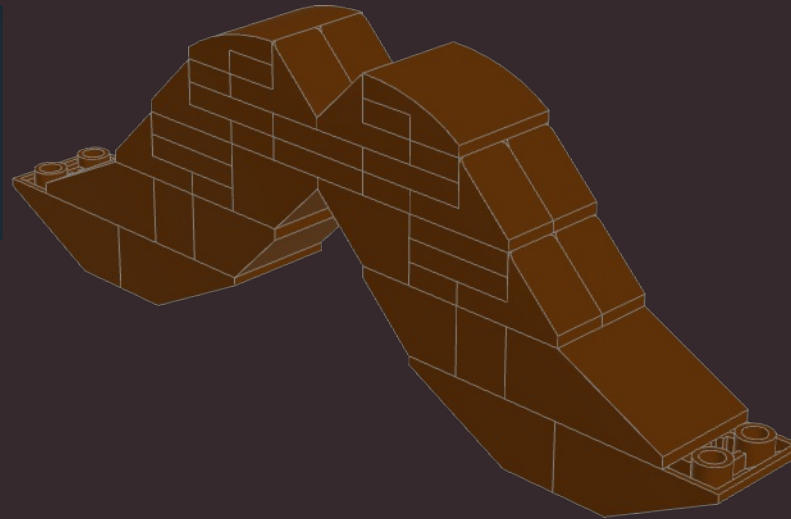
2x



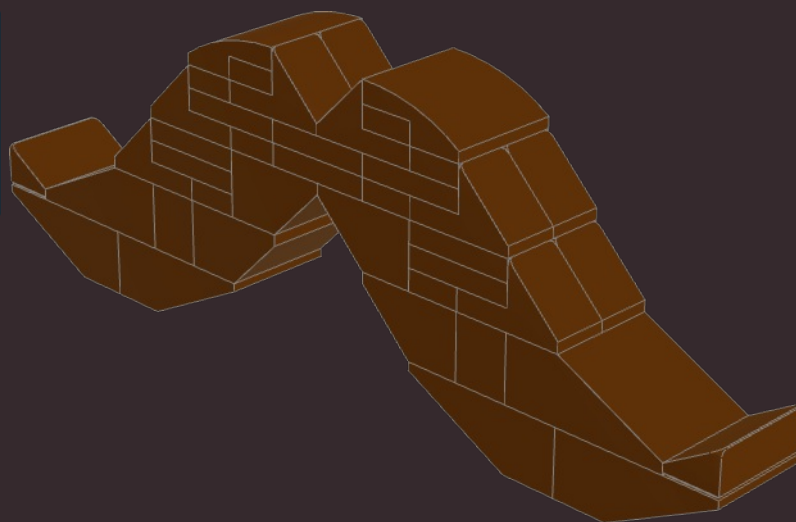
20

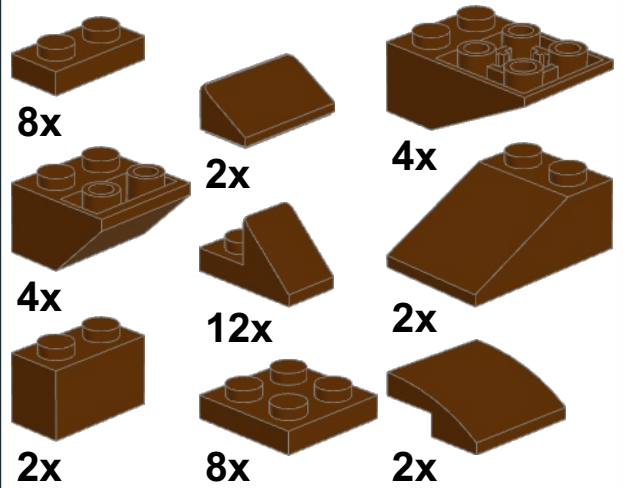


4x



21





Honorable mentions of supporters:

Teg12345

dalesr

csscg

Bwtpelego

inkachi

BIGBOYE

guest-982688

rob2190

kth4711

lscan3221

edelsberger



Hope you had fun with this model and instructions. As always you can reach out to me via email:

[Email: birdbrickbuilds@gmail.com](mailto:birdbrickbuilds@gmail.com)

You can also check my work on rebrickable and instagram:

<https://rebrickable.com/users/birdbrickbuilds/>
<https://www.instagram.com/birdbrickbuilds>

If you wish to help me continue to make this models and instructions you can buy me a coffee to help me stay up late:

<https://www.buymeacoffee.com/birdbrickbl>

Or you can buy my Coffee Espresso MOC:

<https://reb.li/m/118798>

Or even you can buy my Beer Mug MOC:

<https://reb.li/m/137364>



This work is licensed under a [Creative Commons Attribution-NonCommercial-ShareAlike 4.0 International License](https://creativecommons.org/licenses/by-nc-sa/4.0/).